

Glass Defect Detection



Our laser-powered optical scanner helps clients like you successfully *recognize* and *detect* any defects located on the exterior and the interior of glass substrates.

HOW DOES IT WORK?

1. A laser scans the entirety of the surface.
2. System generates images and reports showcasing location, size, and type of defect.
3. The diamond scribe marks spots of interest for further analysis.

Effective



Full-surface scan with nanometer sensitivity

Compatible



Scans any shape less than or equal to 300 mm x 300 mm

Efficient



Scans a 150 mm x 150 mm wafer in under 3 minutes

Resilient

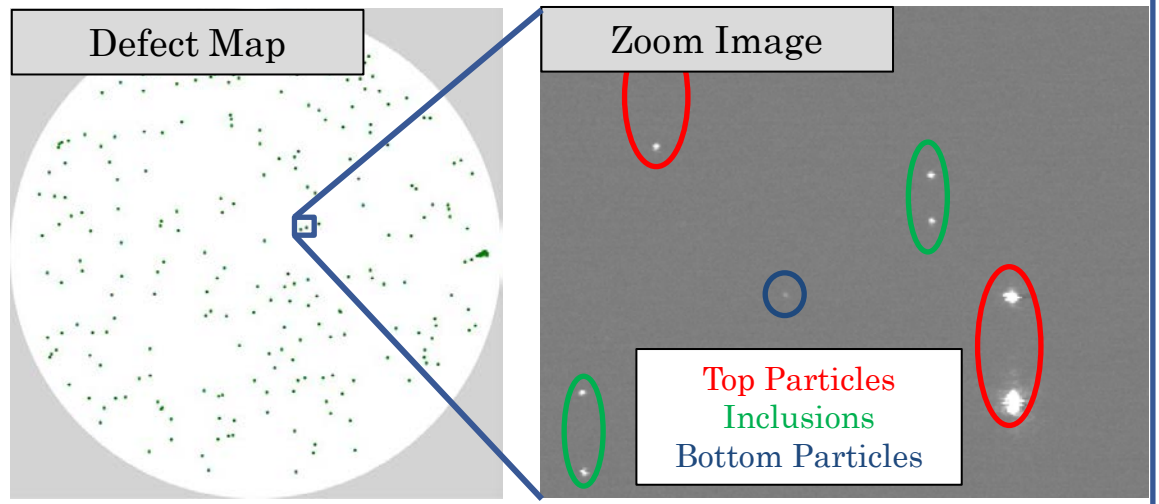


Capable of scanning fragile and thin glass

Lumina Instruments specializes in detecting the glass defects shown below:

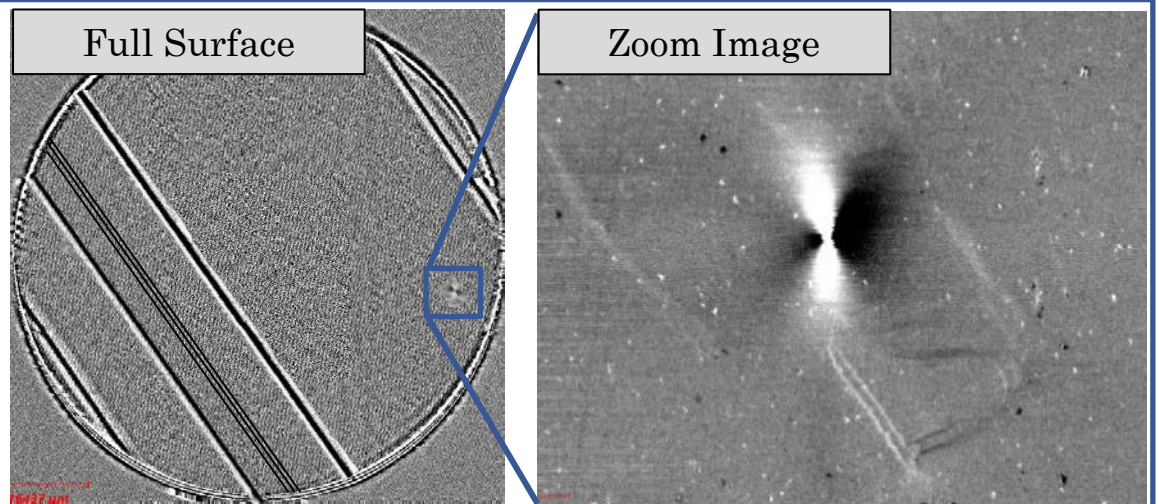
Inclusions

Contaminants incorporated within the glass during the melting phase



Internal Stress

Tension or index variation formed within glass during production



Stains

Discoloration on the surface due to film residue or cleaning process

